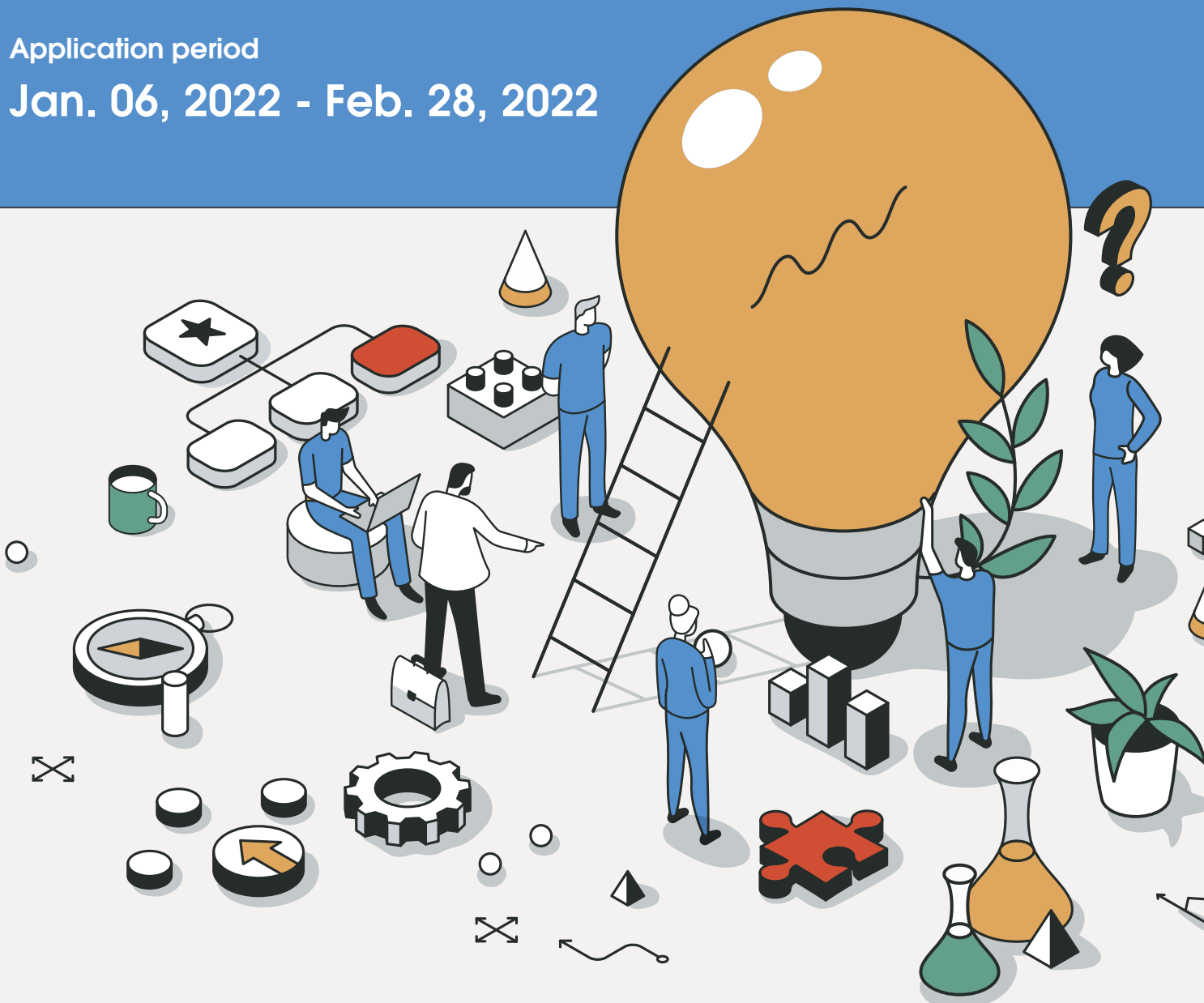
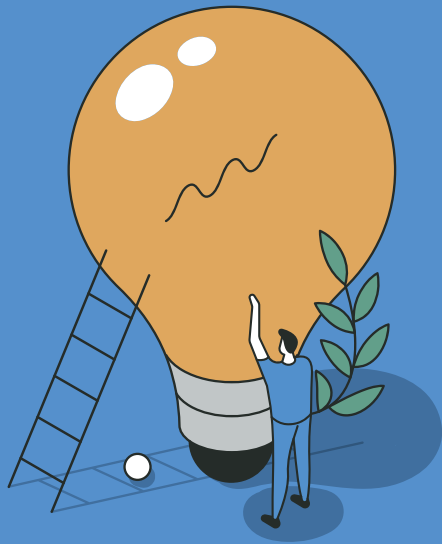


OPEN INNOVATION in 2022

Application period

Jan. 06, 2022 - Feb. 28, 2022





Asahi Kasei Pharma is always seeking collaborative partners for innovation.

To help us contribute life and living for people around the world, we wish to work together with you to nurture our passion and innovative ideas.

“Creating for tomorrow” with you.

We sincerely look forward to receiving your research proposals.

Requested programs



Research period

The research will be conducted over a period of 1–3 years, depending on the research content. Milestones will be set for each year, and the content of the research will be reviewed as needed based on the research results.

Research expenses

20,000–200,000 USD (per project, per year)
Depending on the research content and stage, we will determine the research expenses based on the research plan agreed upon by both parties.

Eligible applicants

Researchers who belong to a university or research institute outside Japan (academia, pharmaceutical company, bio-tech, start-up, etc.). Students are not accepted.

Selection criteria

The proposals to be adopted will be selected based on a comprehensive evaluation of conformity to the requested topics, originality and usefulness of research proposed, research plan viability, and conflict with Asahi Kasei Pharma internal projects.

Selection system

Review and selection of proposals will be conducted at a meeting of Asahi Kasei Pharma research specialists.

Selection schedule



● Application period

5:00AM, Jan. 6, 2022 GMT to 8:00AM, Feb. 28, 2022 GMT

● 1st selection (document screening)

You will be notified of 1st selection results within 1.5 months of the close of applications.

● 2nd selection (interview)

You will be interviewed by Asahi Kasei Pharma researchers (under NDA if required). Review and selection will be based on discussion of the proposed research and the framework for a possible contract. The review and selection period will be approximately 2 months. You will be notified of the result after selection.

Cautions

- 1 Please provide only non-confidential information when submitting an application.
- 2 You may simultaneously submit research proposals to other companies, or apply for research grants or research funding to a public or private-sector body or organization, but if your proposal has already been selected elsewhere, please inform us before submitting the application, as we may choose to exclude your proposal from selection for this reason.
- 3 Please note that we will not select a research proposal that has already been selected by another company for joint research.
- 4 We will not use any of the materials and information received with research proposals and during the application process for any purpose other than this selection process.

Further information and contacts

To submit questions and inquiries to us, please use the “Contact us” form on our web site.

<https://www.asahikasei-pharma.co.jp/a-compass/en/>

